



St. Alphonsus Road, Clapham, SW4

4 bedroom house for sale

£1,150,000

Freehold

Property Details

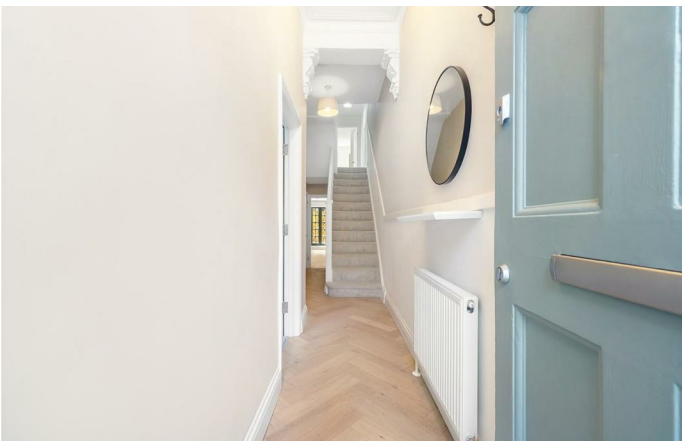
A beautifully refurbished four double bedroom house with an additional loft room and private South-Facing garden, tucked away in the heart of Clapham Common. Tastefully renovated, the property offers a light and airy feel with a neutral décor, providing a perfect canvas for personal style. The ground floor comprises a bright front reception with a square bay window, and a second versatile reception opening via French doors onto the garden. A striking downstairs WC adds flair, while the spacious kitchen diner, with marbled splashback, butler sink and elegant cabinetry in a tone reminiscent of DeVol's Trinity Blue, is perfect for family life and entertaining. The South-facing garden offers a low-maintenance blank canvas for al-fresco dining, complemented by Clapham Common just a five-minute stroll away. Upstairs, four generous doubles are arranged over two floors, the principal spanning the width of the home and the others all featuring garden views. Two stylish bathrooms serve the upstairs. A versatile loft room completes this lovely home.

Features

- Four double bedrooms
- Versatile loft room
- Two bathrooms and downstairs WC
- South-facing garden
- Victorian freehold house
- Completely refurbished
- Tube station a three-minute walk
- Clapham Common a five-minute stroll away
- Old Town, Abbeville Village and Clapham High-Street all close by
- Chain-free

Council tax band D EPC rating D (64)





St. Alphonsus Road, Clapham, SW4

St Alphonsus Road, SW4
4 Bedroom House with Loft Room

APPROXIMATE GROSS INTERNAL AREA: 1800 SQ FT / 167.2 SQ M



While we try our very best, floor plans are produced as a guide only and we take no responsibility for the precise accuracy with which any property is represented.

St. Alphonsus Road, Clapham, SW4

